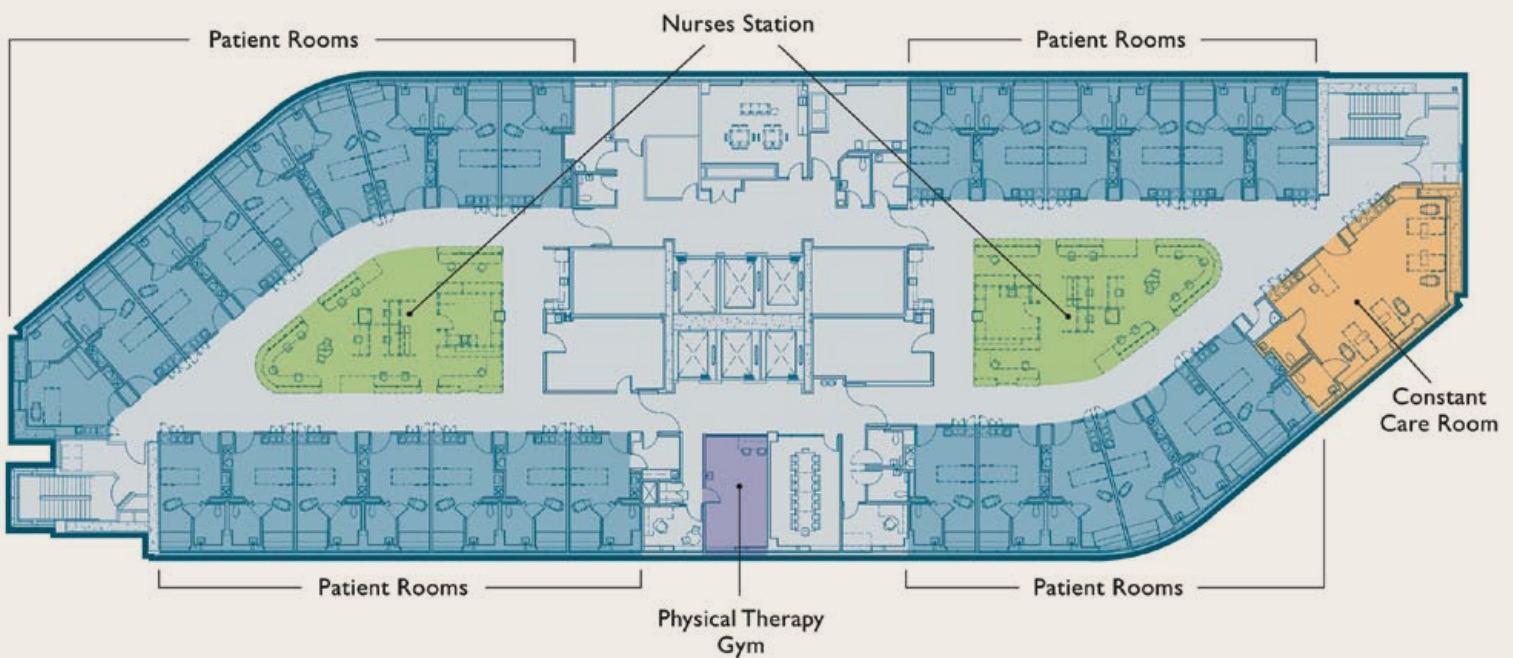


# The Patient Facility

## (Silver Zone)

*Both the Emergency Department and the Patient Facility embrace Evergreen's philosophy of family centered care, which has been a hallmark of our Women's and Children's Services over the years.*



“At the heart of family-centered care is the belief that the best care is built on partnerships between the patient, their family and the medical professionals serving them,” explains Debbie Brown, director of Medical Surgical Services. “Patients and families are encouraged and supported in participating in care and decision-making. Our practitioners listen to and honor patient and family perspectives and choices. The patient’s values, beliefs and cultural background are

incorporated into the planning and delivery of care.”

Both of the new facilities have been designed to facilitate that partnership, with private rooms and amenities to make it easy for family members to be with patients around the clock. Rooms in the Patient Facility also include a daybed for a family member to stay overnight. We’re also looking at ways to bring more services, such as registration, directly to patient rooms.



**1 Nurses Station**

The floor plan is designed to maximize the nurses' ability to see patients. Nurses stations are located in the center of the unit, surrounded by the treatment rooms. The stations are low, and secure areas are glassed in, to provide uninterrupted visibility of all rooms at all times. Each 16-bed unit has its own nurses station.

In the near future, nurses will carry wireless phones instead of pagers. So when a patient pushes their call button, it will ring directly to their nurse's phone instead of to the nurses station. This means nurses will be able to respond more quickly to patient requests. Physicians will also be able to contact their patients' nurses directly, resulting in more timely communication.

1



**2 Patient Rooms**

Each of the 32 patient rooms per floor is set up with a "caregiver side" and a "family side." The caregiver side will accommodate all necessary treatment or monitoring equipment. There is exam room-quality lighting above the patient bed. Hallway windows enable nurses to see into the rooms without having to enter and disrupt a sleeping patient.

The family side of each patient room features a picture window and a daybed for overnight guests. There is additional seating for visitors, ample storage for belongings and a TV for entertainment. Each private bathroom contains a fully accessible shower. Soothing fabrics and colors, along with prints of original artwork, add a homey feeling to each room.

2



**3 Pass-Through Cabinets**

These cabinets are accessible from both inside the patient rooms and outside in the hallway, enabling hospital staff to replenish medications and linens and to empty wastebaskets without having to enter the room and disrupt patients and families. The medication cabinet is locked, and accessible only to staff. Having the medications prepared by the nurse at the patient's bedside increases the safety of medication delivery.

**4 Lift System**

This ceiling-mounted system can help lift patients from their bed to a chair and back, reducing the risk of injury to staff while moving patients. These lifts are available in all of the Constant Care rooms, and select patient rooms, in the new facility.

2

2



3

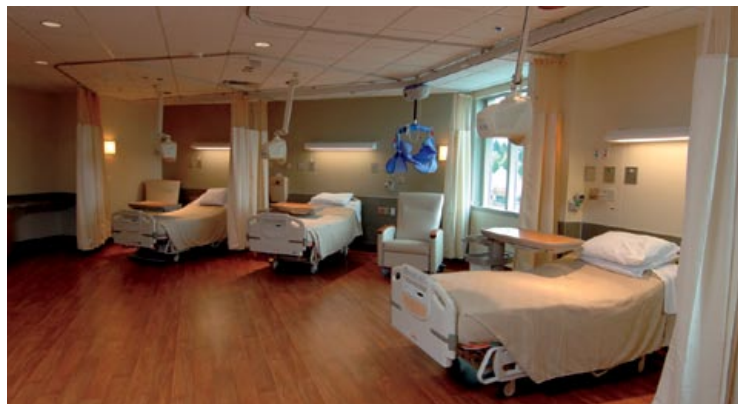
4

### 5 Constant Care Rooms

Each patient floor contains a Constant Care Room, where a nurse provides monitoring for up to four patients who need closer supervision due to the risk of falls or disorientation due to drugs or anesthesia. This care concept was pioneered by Evergreen three years ago.

### 6 Public Areas

The spacious, sun-lit lobby in the Patient Facility provides a relaxing getaway for patients and visitors alike. Original artwork adorns the walls, and a Visiting Artists Gallery showcases the work of a different local artist each quarter.



5



6

## ADDITIONAL FEATURES

### Isolation Unit

One 16-bed unit, located on the eighth floor, can be sealed off from the rest of the floor to isolate highly contagious patients (such as SARS cases). Negative air pressure will prevent the germs from circulating through the rest of the building.

### Wi-Fi

The entire Patient Facility is Wi-Fi accessible.

### Medication Barcoding

As part of Evergreen's continuing focus on patient safety, the new facility will be readied for bedside medication bar-coding. When giving medication to a patient, the nurse will use a handheld scanner to scan their own ID badge, the patient's barcoded ID

wrist badge and the barcode on the medication to verify accuracy. The system will also prompt nurses to check for potential medication issues, such as blood pressure, before giving the medication. Using the barcode technology, medication administration is automatically and accurately documented in the patient's electronic medical record.

### Nutrition Center

Each unit has a nutrition center, with snacks and juice for patients, and coffee for family members.

### Elevators

A bank of six elevators services the Patient Facility. On one side are three elevators reserved for visitors; each is large enough to accommodate a stretcher if necessary. The three staff elevators are progressively larger sizes, to accommodate bariatric beds and a trauma bed with a full medical crew if needed.

### Future Growth

Only three of the six patient floors will open initially. The other three will remain shelled in, and will be built out as future patient needs dictate. This forward-thinking approach has been used in other Evergreen building projects, and it not only speeds up future development but makes it more cost-effective as all that remains to be done is the interior build-out.

## SERVICES IN THE SILVER ZONE

The new Patient Facility houses the following services:

6th Floor: *oncology and general medical patients*

7th Floor: *orthopedics, spinal surgeries, neurology*

8th Floor: *general surgery, GI, plastic surgery, bariatric surgery*

Space formerly taken by these services in the original Evergreen Hospital building will be remodeled over time to accommodate new programs and services.

## Healing Through Art

At Evergreen, we believe there's more to creating a healing environment than just medical technology and first-class staff. We also offer a soothing and tranquil environment in which to heal. In addition to prints of original artworks in each patient room, the public areas of the new facilities will feature a wide assortment of original art depicting both the beauty of our community and Evergreen's rich history. Here are just some of the highlights.

### IN THE EMERGENCY DEPARTMENT

Patients are greeted at the entrance to the Emergency Department with a large three-panel oil mural of evergreen trees. "Healing Woods" was created by popular local artist Diane Ainsworth.

Work by local artists will be displayed in a Visiting Artists Gallery, located in the entry hall adjacent to the auditorium. A new artist will be featured each quarter, in mediums ranging from oil paintings and watercolor to sketches and fabric art.

The original block print "Autumn Birch" is displayed just inside the lobby. The print was donated by longtime Emergency Department physician Warren Appleton, MD, and the Appleton family.

The Emergency Department waiting room will also have a plasma screen displaying rotating digital art with original music.

### IN THE PATIENT FACILITY

The Visiting Artists Gallery, located at the top of the escalators, will feature a new local artist quarterly.

Three original oil paintings, commissioned for the opening of the Patient Facility, are featured in the lobby of the building. The paintings, by artists Mary Pettit and Travis Hall, reflect the surrounding community during the spring, summer and autumn.

"35 Years of Evergreen" are depicted in two collages containing photos and historical documents from Evergreen's archives. Artist Doug Keith used modern digital art techniques to transform this information into original art.

The hallway of level one features the vibrant Evergreen Hall of Watercolors, where scenes by eight local watercolor artists represent each of the eight cities within the Evergreen Hospital District.

The hallway also features an original four-panel screen by artist Paul Horiuchi. The screen, "Wisteria," was donated to Evergreen by the Univar Corporation.

*Evergreen Healthcare invites our community to visit us and tour the artwork, and to return quarterly to see the new shows featuring local artists.*



Local Artist – Mildred Brunns

*Ninety-year old Mildred Brunns is a longtime resident of the Totem Lake area, and has had a firsthand view of Evergreen's development over the years. Her grandson and great-grandson were born at Evergreen. Her exhibit of watercolors and sketches will be displayed in the Emergency Department entrance hall.*



Local Artist – Mike Sedam

*Mike was a patient in the Emergency Department last summer, with advanced appendicitis following a trip to Eastern Europe. "They saved my life," he says, "and I would do anything for Evergreen." His exhibit of landscape photography will be displayed in the Patient Facility, near the top of the escalator.*